

CARAVANS

STERLING SERIES

2011

YOUR ROAD TO FREEDOM





JAYCO STERLING... RAISING THE BAR

The Jayco Sterling continues to stand proudly as the head of our touring fleet... the flagship that has launched countless holidays and lifetimes of memories.

But time doesn't stand still and the Sterling has continued to evolve into the RV that offers the perfect fit for you.

Some of the advancements to the 2011 Sterling are obvious, while others are 'under the hood', so to speak.

Immediately noticeable are the smoother external lines and the more modern - contemporary - feel from the moment you step inside.

More discreet, yet equally targeted for your comfort and enjoyment, are the little things that make a big difference: like more cupboard space, furniture with radius corners, euro style kitchen cabinets...

Stand out or subliminal, nothing is left to chance.

The Jayco Sterling is your ticket to freedom.





JAYCO STERLING - THE BEST JUST GOT BETTER

Life lovers choose a Jayco Sterling for so many reasons... it's the ideal RV to explore and enjoy at YOUR pace. Mountains, or valleys - rivers or lakes: the opportunities are only limited by imagination.

But regardless of destination - and whether it's overnight or 'over year' - the Sterling has been designed to match your comfort zone with an array of features that are clearly 2010 and beyond.

New in the Sterling this year are venetian blinds on kitchen and ensuite windows, a European kitchen with 'big pot' draws, a 'Lazy Susan' (in selected models), bigger bed, side kitchen overheads, solid doors on the ensuite, upgrades to the microwave, rangehood, oven, ceiling lights ... even the cupboard door handles!

Jayco has also introduced an exciting range of fabrics (including leather), vinyl flooring and laminex from which to choose: all of which is housed in the safe, tough and reliable millennium chassis.

Even the digital TV is now 22" so you can occasionally check in on what the rest of the world is doing!

The best just got better.

Switch on to a Jayco Sterling.



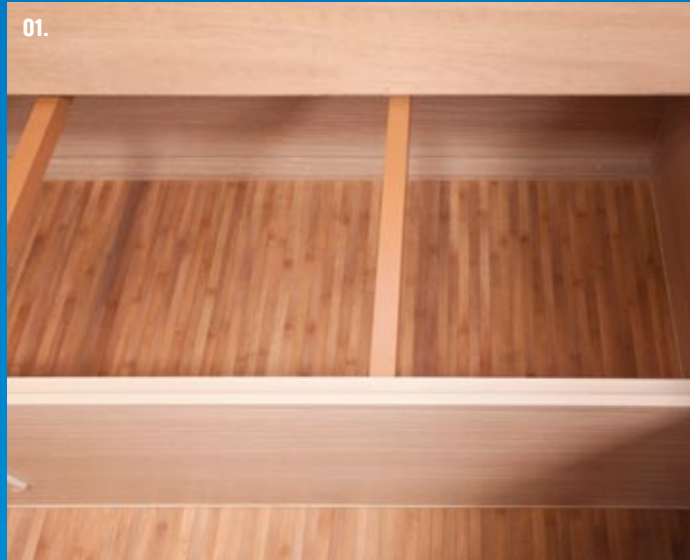
-
- 01. 22" Sphere LCD TV with inbuilt DVD player
 - 02. Smev 4 burner gas griller
 - 03. Full height splashbacks in side kitchen only
 - 04. Double wide easy roll drawers
 - 05. Coleman air conditioner
 - 06. LED lighting

THE JAYCO DIFFERENCE

EUROSTYLE FURNITURE

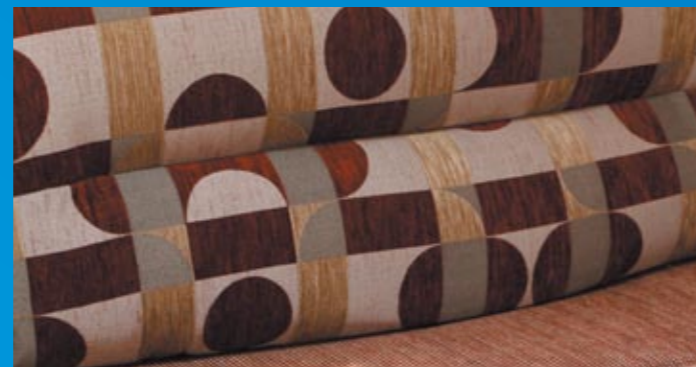
Exclusive timber furniture styling,
The latest in design.

01. Aluminium framing in all high-use areas such as the dinette, lounge and beds.
02. Orthopaedic slats form an important part of our double & single beds. (Only applicable to MS.23, FA 26.1 & IV 28.1) (Double beds extend by an additional 150mm)
03. Beds lift up easily with the assistance of gas struts to provide ready access to large storage areas.
04. Positive cupboard catches to ensure your valuables travel securely.
05. New curved extrusion - adds strength and style
06. Lightweight cabinet fronts are securely screwed - not stapled - to provide additional strength.



THE ULTIMATE IN COMFORT AND STYLE

- All cushions use Enduro™ foam, Australia's most recognized high-resilience foam, providing years of comfort & support.
- Enduro™ foam is fire retardant.
- All Jayco upholstery features Ultra-Fresh antimicrobial protection, inhibiting growth of mould, mildew and fungi and low in dust mite allergen - assisting in the prevention of allergies, respiratory tract disorders and asthma.



STERLING DÉCOR... YOUR RV, YOUR DESIGN

One of the best loved features about the Jayco range of RVs is the multitude of floor plan options that not only give you a sense of ownership, but also 'involvement'.

Well, the Jayco Sterling - circa 2011 - takes it a step further with numerous fabric options for bolster and base cushions, optional leather, plus varied choices for laminex and floor vinyl...

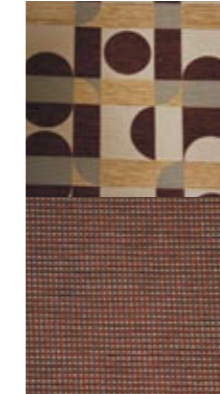
Why? Because the Jayco Sterling is your RV... it now reflects your style.

FABRIC

Bolster Cushion



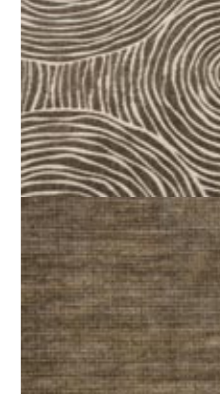
Gatsby Ink —
Dapple Black



Gatsby Russett —
Dapple Russett



Reflective Denim —
Viking Denim



Gillespie —
Lotus Bisque



Balora Slate —
Crest Slate Plain

Base Cushion

LEATHER

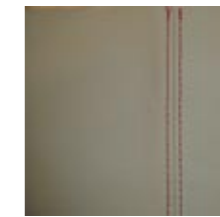
Bolster Cushion / Base Cushion



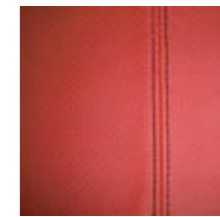
Ink



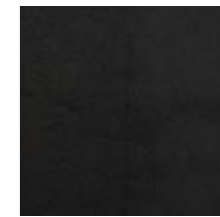
Sahara



Mushroom



Shiraz



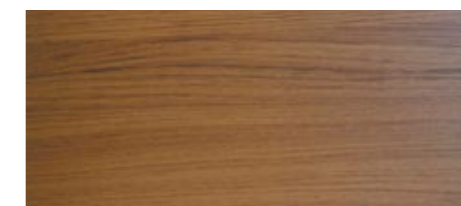
Liquorice

CURTAINS



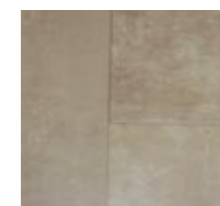
Adventure

JOINERY

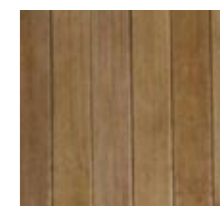


Royal Teak

FLOOR VINYL

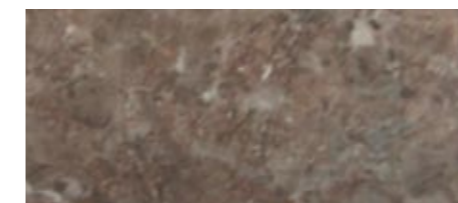


Oxyd Beige Tile

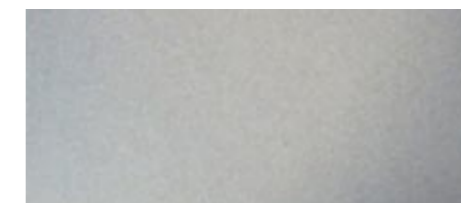


Bamboo Timber

LAMINEX



Mocha Gloss



Greige



Quartz Gloss

THE JAYCO OUTBACK RANGE...

GET OFF THE BEATEN TRACK

OK, you're an explorer by nature with a spirit of adventure that extends farther down the track.

With Jayco's Outback range you can now explore Australia's vast network of unsealed roads, freeing you up to 'find' some of our most incredible hideaways.

Jayco's Outback Sterling has the added strength and clearance you'll need for rugged conditions, but there are limits.

After all, some bush tracks are barely suitable for a 4WD, let alone a RV!

When you are driving 'off road' and, in particular, unfamiliar territory, always take precautions such as driving slower and taking extra care. As the most experienced 4-wheel drivers say: "It's best to use your Jayco Sterling as a base station and head into rougher terrain without anything under tow."

One thing is for sure... when you reach your destination, you'll really appreciate the home comforts of your Jayco Outback Sterling!

OUTBACK RANGE FEATURES

- ALKO outback leaf springs
- Underslung axle (Improved ground clearance)
- RHS galvanised bumper bar
- External 12v auxiliary plug
- Double step
- 16" alloy wheels with 245/70R16 tyres
- 150mm x 50mm RHS main chassis members
- 125mm x 50mm RHS "A" frame
- ALKO outback drop jacks
- ALKO off-road electric brake magnets
- Protective aluminium checker plate finish on sides
- 12v internal power point
- Jayco mud flaps
- Rocker roller suspension



THE JAYCO STERLING FEATURES... WHAT THE OTHERS CALL OPTIONS!

INTERNAL FEATURES

- Aluminium LP corner extrusion & aluminium seat frames
- Aluminium LP corner furniture extrusion & aluminium seat frames
- 22" Sphere LCD TV with inbuilt DVD Player and bracket
- CD / MP3 radio player with iPod auxilliary & speakers
- 12v wind up antenna
- Water filtration system
- Control panel with water tank indicators & battery state of charge
- Lift up bed's with orthopaedic slats and innerspring mattresses
- Coleman Air Conditioner
- Dometic RM2553 3 way fridge
- SMEV 4 burner gas grill / oven with one 240v element, 12v ignition & flame failure device
- Microwave
- Pullout pantry chrome 3 tier (selected models)
- Built in battery "Trickle" charger & 100amp battery
- 150mm extending double bed
- Mains pressure flickmixer tap to sink (12v pump to shower models)
- Flush fitting stainless steel sink with cover
- Jayco clock
- 12v lighting system
- Positive cupboard catches & stays
- Recessed downlights
- Easy roll drawers under single beds & dinette seats
- Circular shower models (selected models)
- Zippered cushion covers (vinyl backed)
- Rubber backed curtains
- Designer box pelmets
- Scrim curtains (weighted)
- 12v power point for LCD screen
- Splashbacks to side kitchen

EXTERNAL FEATURES

- Jayco Tough Frame
- Galvanised "Millennium Chassis"
- Carefree roll out awning
- LED external running & tail lights
- 2 corner radius Tri-lock Trimatic security door
- One piece fibreglass roof
- Jumbo easy access front boot with gas struts & one piece boot liner
- Alloy wheels 14" (15" to 23' & above)
- 12v annexe light (x 2 on 23' & above)
- Bumper bar
- Jockey wheel centre of a frame
- External Speakers x 2
- Flexcoat pebble guard
- Concealed windout windows
- Moulded front & rear design
- 240v / Gas HWS on shower models
- Insulated roof & walls
- Front window stone shield with gas struts
- Grab handle and light at door
- Lockable water filler
- Spare wheel cover
- 240v external power point
- External mains pressure tap
- 1 x 82 water tank (x 2 on shower models)
- 1 x 9kg gas bottle (x 2 on shower models)
- Gas bottles concealed in front boot
- 12pin car / loom plug
- Spare wheel jack
- Rocker leaf spring on tandems
- Durable moulded wheel boxes
- ALKO drop jacks
- ALKO jockey wheel

INTERNAL OPTIONS

- Leather upholstery
- Lemair washing machine
- Electric slide out lounge*
- Electric slide out bed*
- Dometic 4601 3 Way Fridge (185 litre)

*Not available on all models

EXTERNAL OPTIONS

- External slide out BBQ*
- Rear window stone shield*
- Fiamma rear bike carrier*
- Add-a-room
- Solar pack
- External shower
- Outback pack
- Simplicity Independent Suspension

*Not available on all models

SLIDEOUT LOUNGE & BED OPTIONS

While just about everything you need is already built into the Sterling, there are electric slide-out wall functions in the sleeping and lounge areas to create amazing floor space inside to move around, giving you a much more comfortable experience.

SLIDEOUT LOUNGE

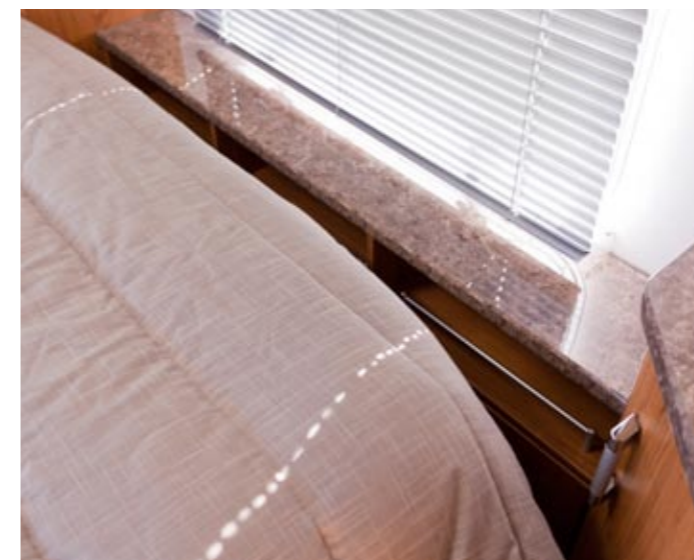


Normal lounge mode



Slideout lounge mode

SLIDEOUT BED



Normal bed mode



Slideout bed mode

JAYCO CARAVANS TYRES ARE FILLED WITH NITROGEN



Jayco has implemented a state of the art Nitrogen-based pressurisation system for its entire range of RV's.

Nitrogen offers the following benefits over oxygen:

- Fuel savings of up to 3%
- 25% in reduction of tyre wear
- 27% reduction on tyre blowouts
- Eliminates interior wheel corrosion
- Improved handling and safety

SUPERIOR DESIGN & CONSTRUCTION JAYCO TOUGH FRAME

Jayco's tough frame consists five major ingredients which - when vacuum bonded - makes it superior in strength and detail by comparison to the conventional 'stick & tin' aluminium cladded caravans on the market.

01. **Polypropylene**
02. **Jayco Tough Frame**
Incorporates galvanised plating to support the internal furniture fittings
03. **Internal Wall Ply**
CE coated for durability
04. **Polystyrene Foam**
Superior Insulation
05. **Hi Density ABS**
06. **Aluminium Outer Frame**
19mm x 19mm welded tubular frame - strong but light
07. **3mm Ply**
For added strength
08. **Fibre Glass**
150% thicker than aluminium, dent resistant with a high gloss finish



RELIABLE POWER

The Setec power converter is Australian-designed and constructed for our country's occasionally inconsistent supply of power in remote areas. This built-in fused power converter provides a safe 12v supply from 240v mains. Produced specifically for Jayco, the Setec system delivers generous lighting on either 240v or 12v supply. When only 12v power is available, the unit is self-sensing and no switching is required. A valuable additional feature of the unit is its built-in trickle charger (13.5v output) to cater for an auxiliary battery.



ENDURANCE CHASSIS

Independent testers describe it as the clever chassis...

- Superior strength and protection.
- PSC members, that support the floor, are superior to box section steel in terms of bending and compression.
- The design enables the chassis to be light but still achieve maximum strength.
- All chassis are galvanized for long life.
- Pressed holes offer protection for under floor wiring and plumbing.



OVER 200 LAYOUT OPPORTUNITIES WITH THE JAYCO MODULAR SYSTEM™

At Jayco, we pride ourselves as industry leaders for innovation and customer satisfaction. Our design team has developed a modular internal layout system that offers you an extensive range of layout options when choosing your RV.

The Jayco Modular System™ (JMS™) is a new and exciting process where you - the actual end user - can become the designer. When the base layout has been selected from the range, you simply begin the fun of choosing the module options that will suit your lifestyle on the road and maximise your holiday enjoyment.

SPECIFICATIONS & FLOORPLANS

MODEL	Body Length	Interior Length	Travel Length	Travel Height*	Interior Height	Width inc Awning	Towball weight** (approx)	Tare weight (approx)
19.61-4	6087mm 19' 11"	5421mm 17' 9"	7293mm 23' 11"	2845mm 9' 4"	1978mm 6' 5"	2470mm 8' 1"	132	1930
19.61-4 OB	6087mm 19' 11"	5421mm 17' 9"	7403mm 24' 3"	3000mm 9' 10"	1978mm 6' 5"	2470mm 8' 1"	163	2090
20.64-1	6473mm 21' 2"	5807mm 19' 0"	7679mm 25' 2"	2895mm 9' 6"	1978mm 6' 5"	2470mm 8' 1"	162	2070
20.64-1 OB	6473mm 21' 2"	5807mm 19' 0"	7789mm 25' 6"	3050mm 10' 0"	1978mm 6' 5"	2470mm 8' 1"	194	2200
21.65-2	6640mm 21' 9"	5974mm 19' 7"	7846mm 25' 8"	2895mm 9' 6"	1978mm 6' 5"	2470mm 8' 1"	149	2060
21.65-2 OB	6640mm 21' 9"	5974mm 19' 7"	7956mm 26' 1"	3050mm 10' 0"	1978mm 6' 5"	2470mm 8' 1"	147	2170
21.65-3	6640mm 21' 9"	5974mm 19' 7"	7846mm 25' 8"	2895mm 9' 6"	1978mm 6' 5"	2470mm 8' 1"	190	2100
21.65-3 OB	6640mm 21' 9"	5974mm 19' 7"	7956mm 26' 1"	3050mm 10' 0"	1978mm 6' 5"	2470mm 8' 1"	185	2220
21.65-4	6640mm 21' 9"	5974mm 19' 7"	7846mm 25' 8"	2895mm 9' 6"	1978mm 6' 5"	2470mm 8' 1"	162	2080
21.65-4 OB	6640mm 21' 9"	5974mm 19' 7"	7956mm 26' 1"	3050mm 10' 0"	1978mm 6' 5"	2470mm 8' 1"	177	2210
21.65-7	6540mm 21' 5"	5874mm 19' 3"	7746mm 25' 5"	2895mm 9' 6"	1978mm 6' 5"	2470mm 8' 1"	169	2040
21.65-7 OB	6540mm 21' 5"	5874mm 19' 3"	7856mm 25' 9"	3050mm 10' 0"	1978mm 6' 5"	2470mm 8' 1"	161	2170

* Includes Coleman Low Profile Air Conditioner.

Outback travel heights increase by 205mm (19') 155mm (20' - 25') over the touring model.

** The towball and tare weight is only a guide and will change depending on accessories that are fitted to your van. It is advisable to discuss this with your Jayco Representative.

SPECIFICATIONS & FLOORPLANS CONT.

Whether it's just you, the whole family or a few extra friends... relax. There's a layout that's just perfect for you.

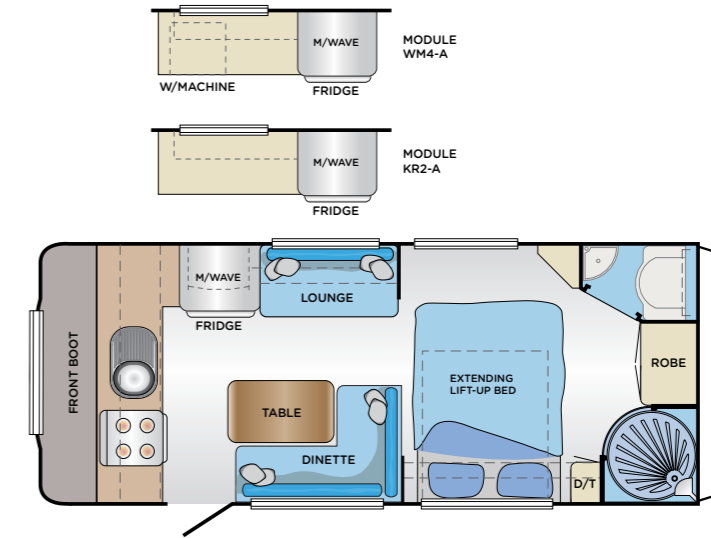
MODEL	Body Length	Interior Length	Travel Length	Travel Height*	Interior Height	Width inc Awning	Towball weight** (approx)	Tare weight (approx)
21.65-8	6540mm 21' 5"	5874mm 19' 3"	7746mm 25' 5"	2895mm 9' 6"	1978mm 6' 5"	2470mm 8' 1"	181	2070
21.65-8 OB	6540mm 21' 5"	5874mm 19' 3"	7856mm 25' 9"	3050mm 10' 0"	1978mm 6' 5"	2470mm 8' 1"	182	2220
23.72-1	7244mm 23' 9"	6578mm 21' 6"	8450mm 27' 8"	2910mm 9' 6"	1978mm 6' 5"	2470mm 8' 1"	192	2240
23.72-1 OB	7244mm 23' 9"	6578mm 21' 6"	8560mm 28' 1"	3065mm 10' 1"	1978mm 6' 5"	2470mm 8' 1"	205	2320
23.72-5	7244mm 23' 9"	6578mm 21' 6"	8450mm 27' 8"	2910mm 9' 6"	1978mm 6' 5"	2470mm 8' 1"	156	2220
23.72-5 OB	7244mm 23' 9"	6578mm 21' 6"	8560mm 28' 1"	3065mm 10' 1"	1978mm 6' 5"	2470mm 8' 1"	170	2310
24.75-1	7453mm 24' 5"	6787mm 22' 3"	8659mm 28' 5"	2910mm 9' 6"	1978mm 6' 5"	2470mm 8' 1"	192	2230
24.75-1 OB	7453mm 24' 5"	6787mm 22' 3"	8769mm 28' 9"	3065mm 10' 1"	1978mm 6' 5"	2470mm 8' 1"	205	2340
24.75-2	7453mm 24' 5"	6787mm 22' 3"	8659mm 28' 5"	2910mm 9' 6"	1978mm 6' 5"	2470mm 8' 1"	197	2295
24.75-2 OB	7453mm 24' 5"	6787mm 22' 3"	8769mm 28' 9"	3065mm 10' 1"	1978mm 6' 5"	2470mm 8' 1"	208	2390
25.78-2	7691mm 25' 2"	7025mm 23' 0"	8897mm 29' 2"	2910mm 9' 6"	1978mm 6' 5"	2470mm 8' 1"	196	2330
25.78-2 OB	7691mm 25' 2"	7025mm 23' 0"	9007mm 29' 6"	3065mm 10' 1"	1978mm 6' 5"	2470mm 8' 1"	207	2420
25.78-3	7800mm 25' 7"	7134mm 23' 4"	9006mm 29' 6"	2910mm 9' 6"	1978mm 6' 5"	2470mm 8' 1"	159	2320
25.78-3 OB	7800mm 25' 7"	7134mm 23' 4"	9116mm 29' 11"	3065mm 10' 1"	1978mm 6' 5"	2470mm 8' 1"	170	2410

* Includes Coleman Low Profile Air Conditioner.
 Outback travel heights increase by 205mm (19") 155mm (20" - 25") over the touring model.
 ** The towball and tare weight is only a guide and will change depending on accessories that are fitted to your van.
 It is advisable to discuss this with your Jayco Representative.

19 SERIES 19.61-4



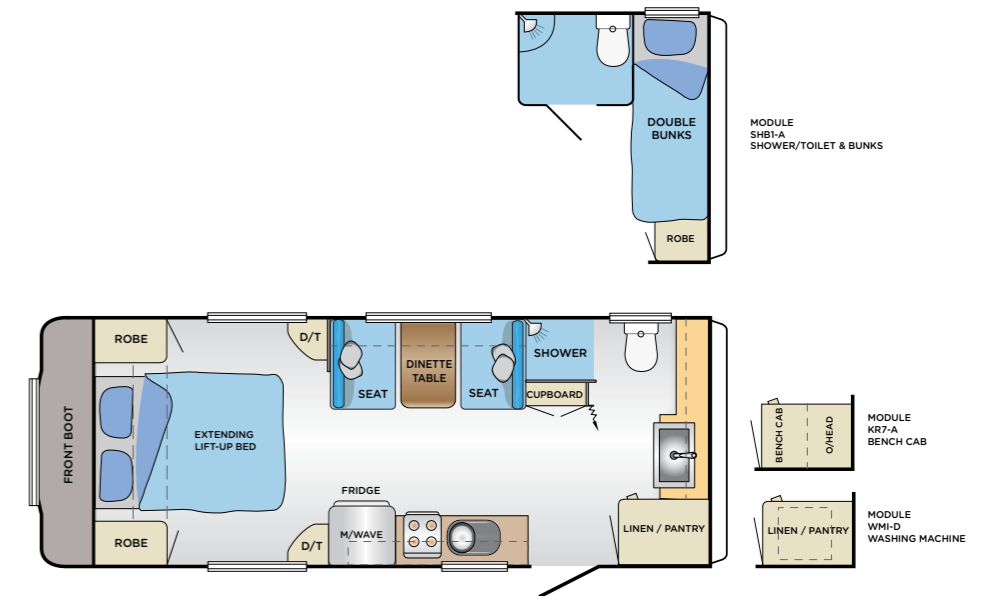
Tare weight: 1930kg
 Tow ball: 132kg



20 SERIES 20.64-1



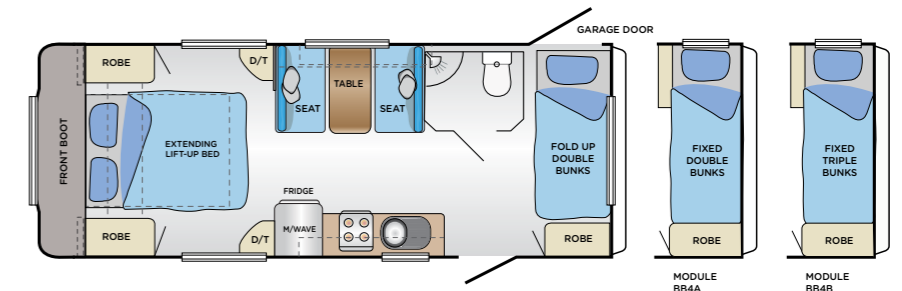
Tare weight: 2070kg
 Tow ball: 162kg



21 SERIES 21.65-2



Tare weight: 2060kg
 Tow ball: 149kg



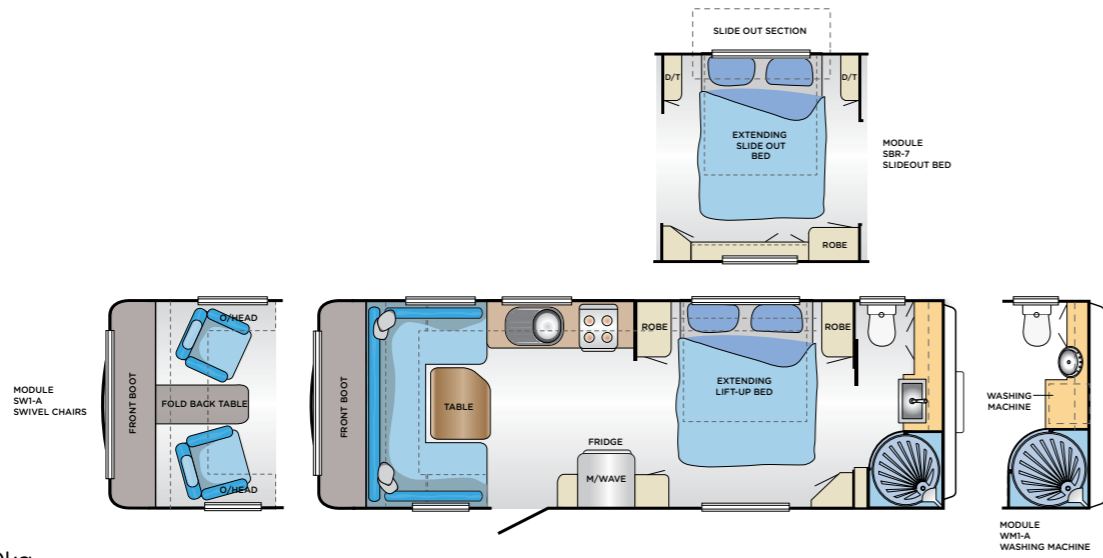
SPECIFICATIONS & FLOORPLANS CONT.

Whether it's just you, the whole family or a few extra friends... relax. There's a layout that's just perfect for you.

21.65-3



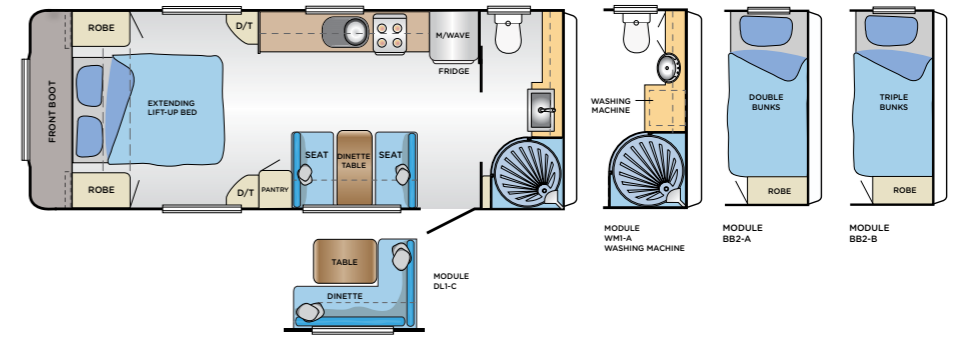
Tare weight: 2100kg
Tow ball: 190kg



21.65-7



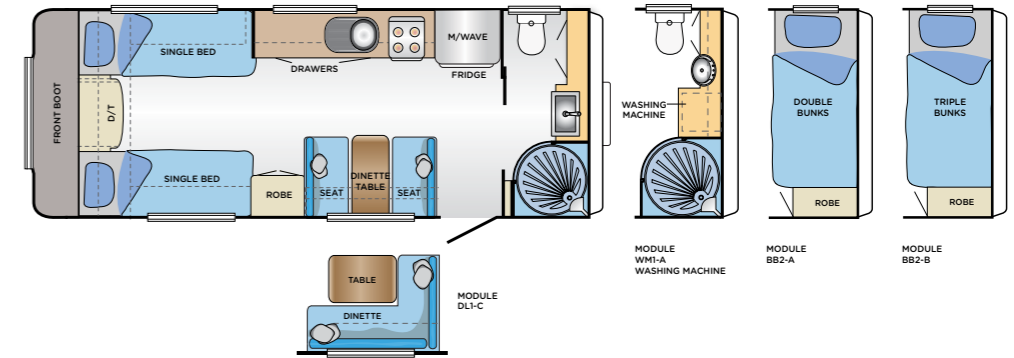
Tare weight: 2040kg
Tow ball: 169kg



21.65-8



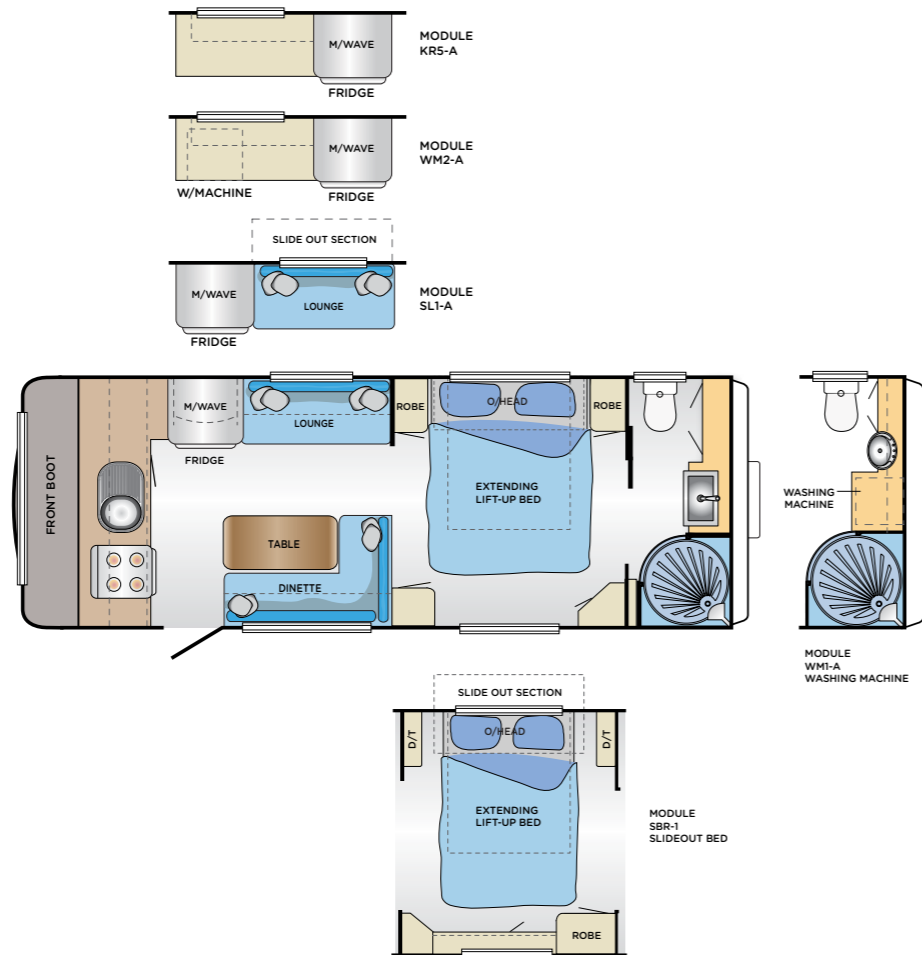
Tare weight: 2070kg
Tow ball: 181kg



21.65-4



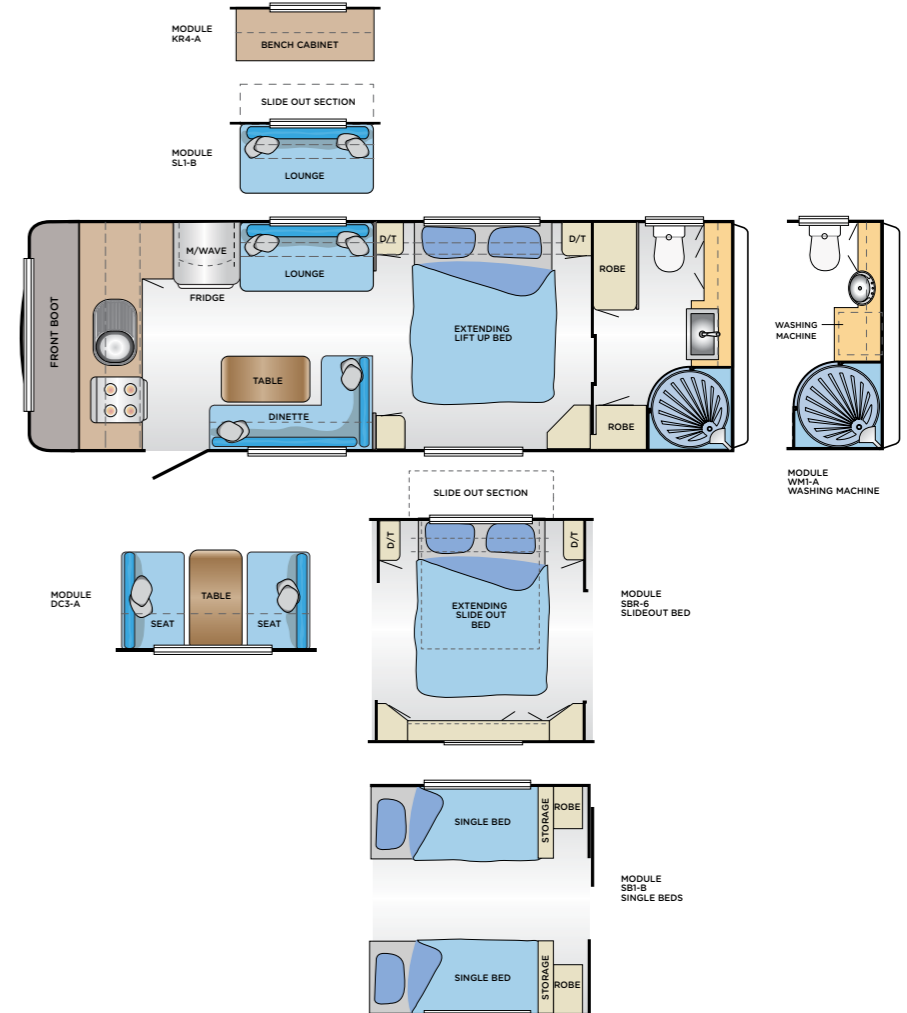
Tare weight: 2080kg
Tow ball: 185kg



23 SERIES 23.72-1



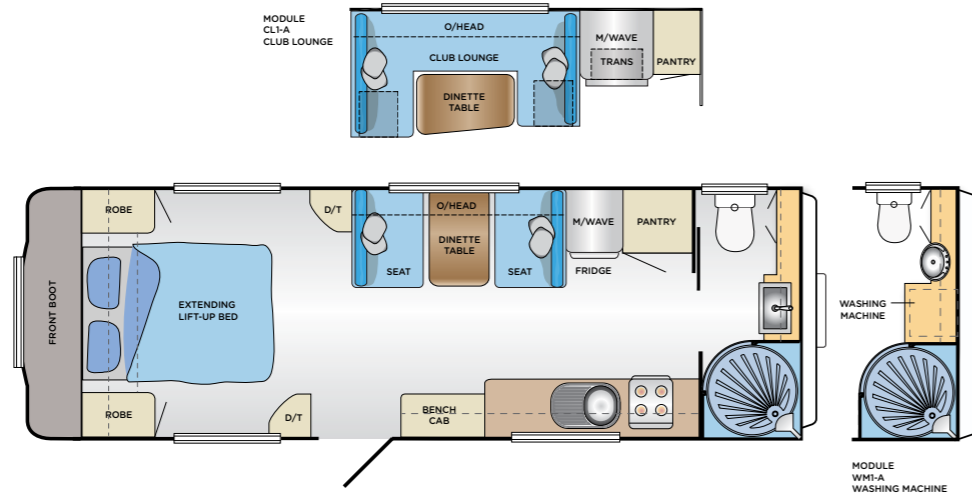
Tare weight: 2240kg
Tow ball: 192kg



SPECIFICATIONS & FLOORPLANS CONT.

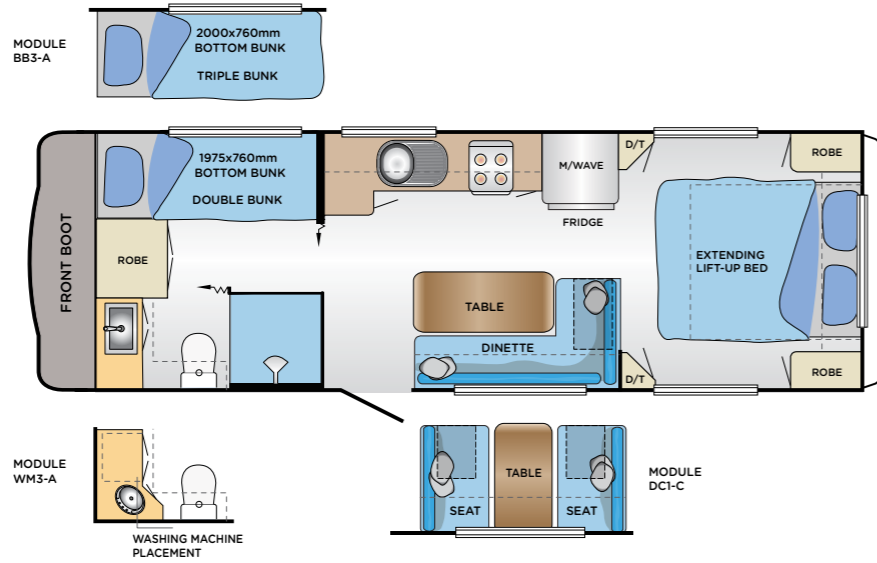
Whether it's just you, the whole family or a few extra friends... relax. There's a layout that's just perfect for you.

23.72-5



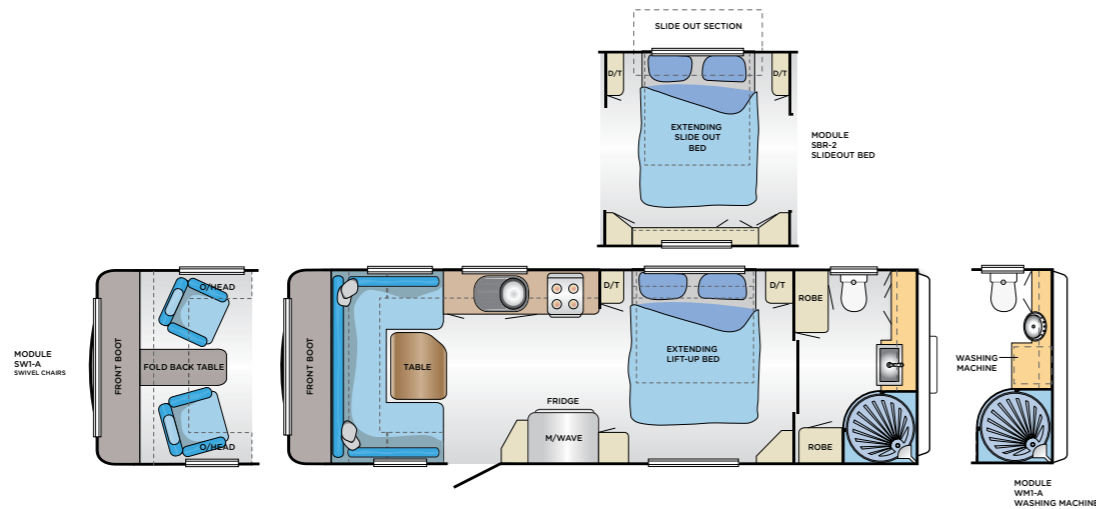
Tare weight: 2220kg
Tow ball: 156kg

**24 SERIES
24.75-1**



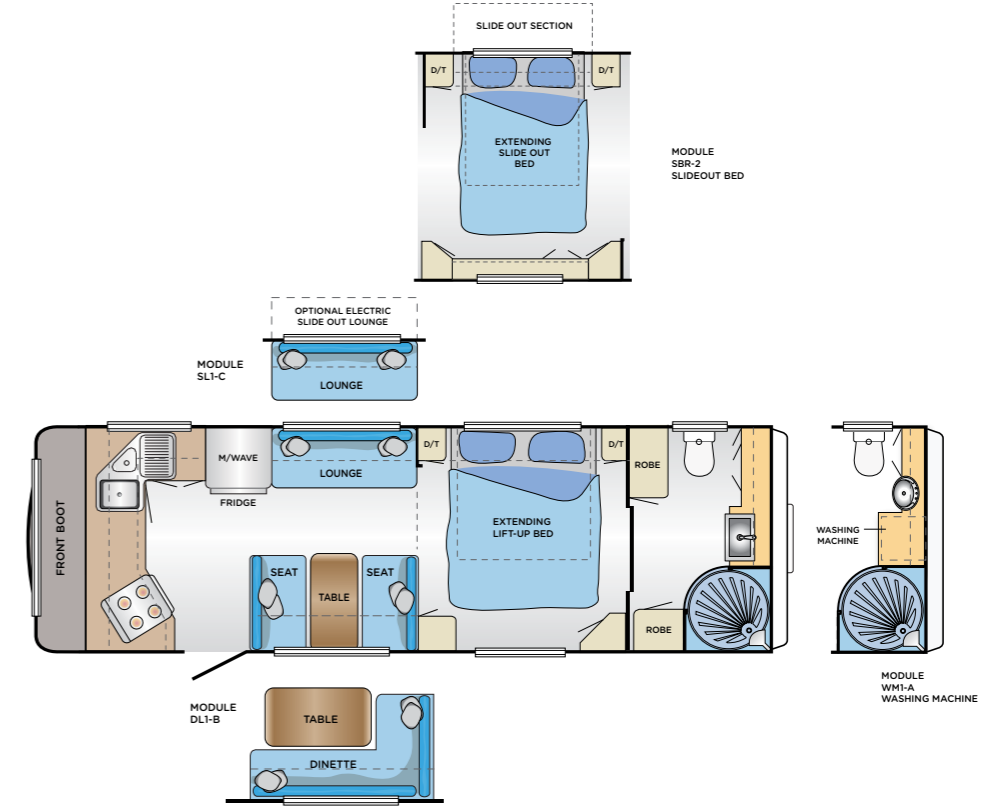
Tare weight: 2230kg
Tow ball: 192kg

24.75-2



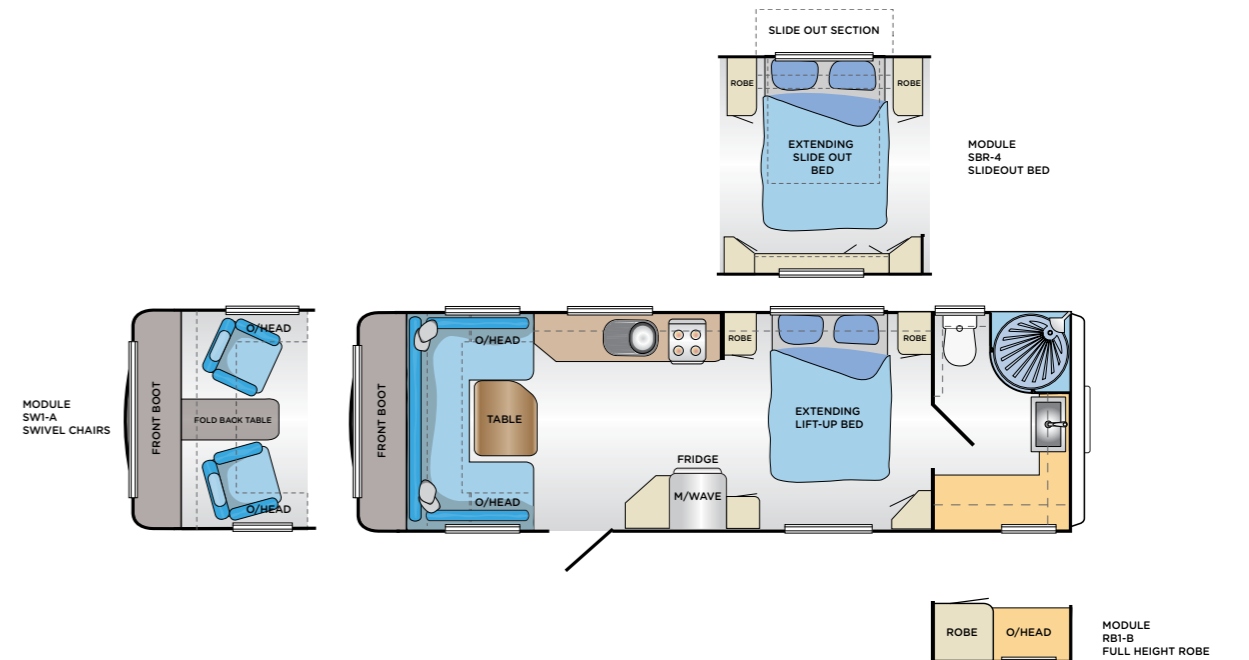
Tare weight: 2295kg
Tow ball: 197kg

**25 SERIES
25.78-2**



Tare weight: 2330kg
Tow ball: 196kg

25.78-3



Tare weight: 2320kg
Tow ball: 159kg



PEACE OF MIND WITH JAYCO

We understand that purchasing a Recreational Vehicle is a significant investment so it is important that you make the right decision with a brand that you can trust.

Here are 5 main reasons why Jayco should be your RV of choice:

01. Jayco Warranty Program:

Take care in knowing that you are protected by Australia's leading warranty program for 12 months.

02. Jayco Roadside Assist*:

Jayco is the only RV manufacturer that offers a 24 hour 3 year Roadside Assistance program free of charge.

03. Dealer and Service Network:

Our Dealer and Service Network is the most comprehensive in Australia. We also carry parts in stock to ensure that we can service you.

04. Value for Money:

We are the most efficient manufacturer in Australia and combined with our significant buying power means that you get more features for less.

05. Resale Value:

It is inevitable that you will sell or trade in your RV when you are looking to upgrade. Jayco products hold their value better than any other RV Brand. It is important to think about this when working out your costings on your new RV purchase.

*Not available in New Zealand

COMMUNITY PASSION & SUPPORT



THE JAYCO WARRANTY

Australia's most respected Warranty offers you 1 year protection on your new Jayco. We take pride in what we build and want to offer you peace of mind that you are covered by Australasia's largest dealer and service network stocking an extensive range of parts to ensure that you can focus on the job at hand... having fun.

THE JAYCO ROADSIDE ASSIST PROGRAM*

3 Years protection offering 24 Hour assistance in times of need. Jayco is the only RV Manufacturer to offer you complimentary Roadside Assist on your new Jayco for 3 years. This program is tailored specifically to offer you roadside support for your new Jayco. This support is there for you 24 hours a day 365 days a year. When you are enjoying the freedom of touring, you can be reassured that Jayco is only a phone call away to support you in an emergency on the road.

THE TRUE VALUE OF OWNERSHIP

With Jayco, as mentioned, you get more amenities, more liveable, home-like features and superior construction for better durability and greater resale value. Simply put, you won't find another RV packed with more **true value** — from the time of purchase to the time you sell.

- + 1-year warranty
- + 3-Year Roadside Assist*
- + Dealer & Service Network (90 Service Agents)
- + Value for Money
- + Better resale value

= True Value of Jayco Ownership

Ever mindful of its role in the wider community, Jayco is an active supporter of a myriad of charitable groups and organizations and are one of the most passionate supporters of Australian sport.

Jayco is involved in many programs, with the aim of giving young athletes the support required for them to excel on the world stage and importantly supporting a number of teams in their quest for Gold at the 2012 Olympics such as the Australian Opals Womens Basketball Team and the Australian Mens & Womens Road and Track Cycling teams.

Jayco is also a long time sponsor of the Jayco Dandenong Rangers, a thirteen year partnership.

Jayco also proudly supports the Jayco Tamworth Music Festival, the Jayco Country Music Awards and the Jayco Country Theatre.



JAYCO STORY

In 2010, Jayco celebrated its 35th Anniversary, a very important milestone for Australasia's most popular Recreational Vehicle Brand.

But even more importantly, our extensive range of recreational vehicles has again been fine tuned as we at Jayco continue pushing the envelope to ensure customer satisfaction and comfort.

And, while our commitment to innovation ensures that Jayco remains the recreational vehicle of choice for pleasure seekers throughout Australia and New Zealand, our mission hasn't altered since day one.

Jayco will continue to invest in manufacturing capabilities and equipment and increase resources in research and development.

All Jayco RV's fully comply with the associations code of manufacturing.

What's more, Jayco offers Australasia's largest range of models, layouts and features, while our manufacturing efficiencies allow us to offer you more for less (our RV's also have higher resale value than any other brand ... all the better for when you upgrade to your next Jayco!) And importantly, the buck doesn't stop when you leave the shop.

Jayco now employ over 850 people from the South East Melbourne Region, the Jayco family are hard working people, passionate about building great products for you to enjoy.

From all of us at Jayco, the message is pre-eminent.

Sound business... Quality product... Value for money... Peace of mind



IN GOOD COMPANY



Jayco is a financial member of the RVMAA. All Jayco RV's fully comply with the associations code of manufacturing.

Jayco Corporation owns the copyright in this Brochure. Unauthorised use, reproduction or adaption is forbidden and will be prosecuted. Due to ongoing improvement, the specifications in this brochure are subject to change without notice.

©JAYCO 2011 P.O. Box 636 Dandenong VIC Australia 3175

Your nearest authorised
jayco sales dealer:

